



Downtown, Woden Street, Salford

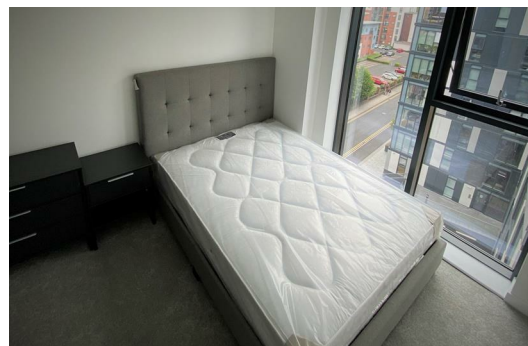
£1,800 PCM

Introducing Downtown, Salford. This 3-bed, 2-bathroom apartment is perfect for young families and professionals alike with its modern appliances, light and spacious rooms and communal roof top terrace with plenty of casual seating for you to relax in. At this development you'll enjoy a whole host of premier benefits including a full-service concierge and gym as they intend to offer a 'hotel-style' service.

As you walk in, you'll be greeted by a large hall, leading into the spacious, open plan kitchen-living area. This room is blessed with light and large floor to ceiling windows, allowing you to relax and unwind with ease after a long day at work. It's also the perfect space for entertaining friends and family members with lovely laminate, wood flooring and neat, modern, built-in kitchen appliances making it that little bit easier. In the kitchen you will benefit from a large fridge-freezer, oven, hob and extractor fan.

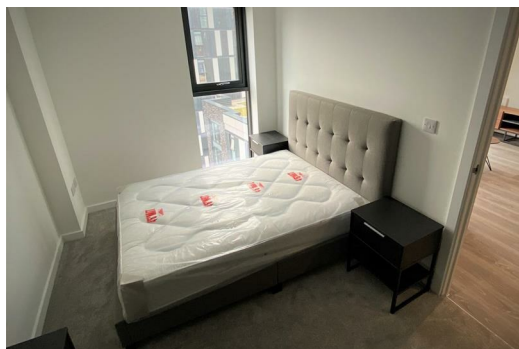
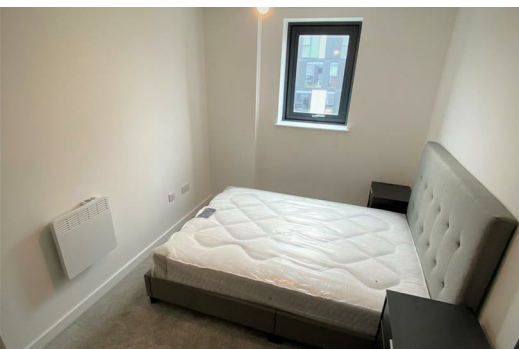
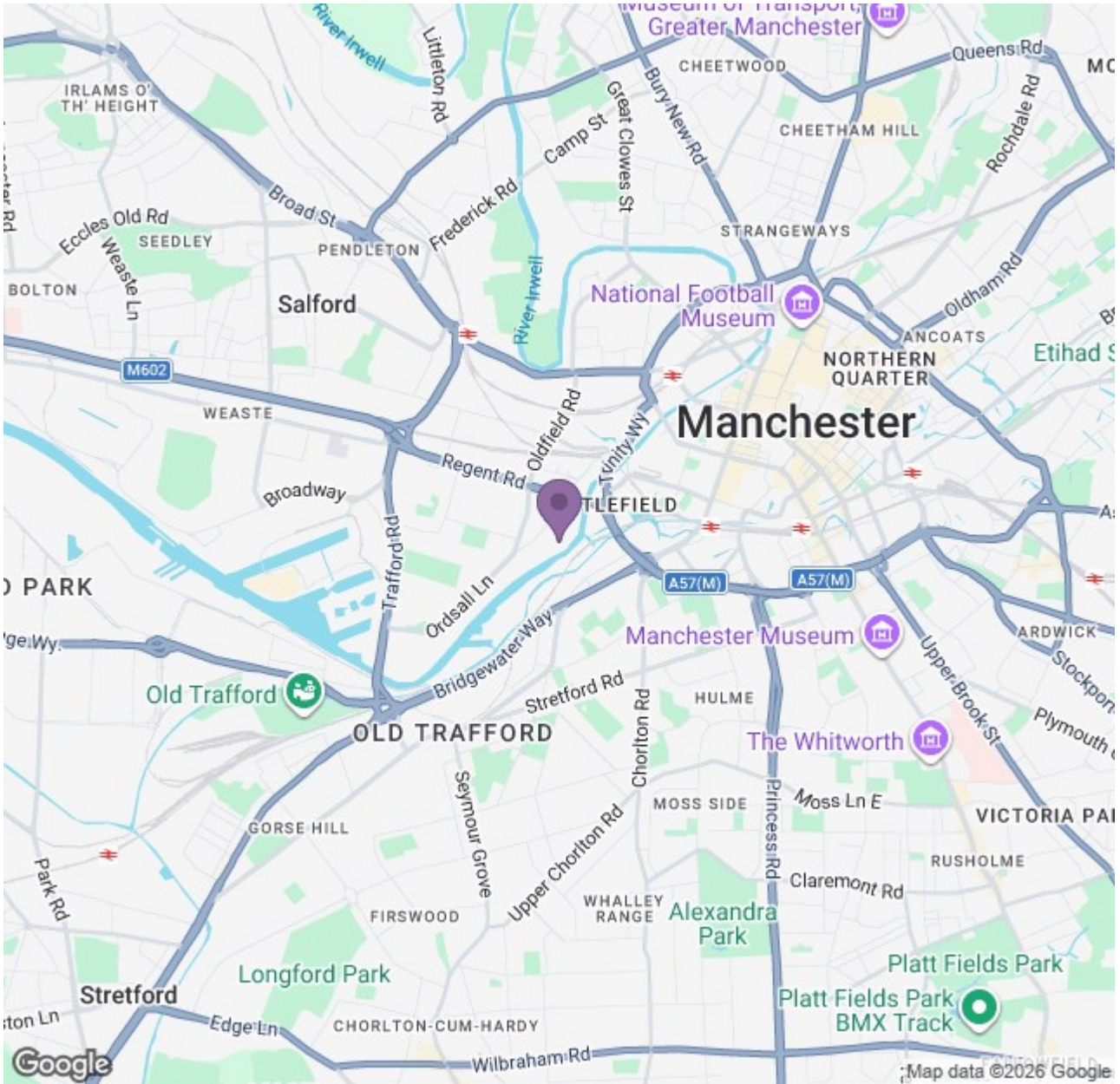
The 3 bedrooms are all well sized and have plenty of light. They are all carpeted with neutral walls, making it easy to make each room your own with your belongings. One bedroom also benefits from a modern en-suite while the other rooms share a sleek 3-piece suite with plenty of shelf space for all the essentials.

As we mentioned, you'll benefit from a full-service concierge, business suite, gym and roof terrace, but that's not all. There is also an on-site spa for you to enjoy a well-deserved pamper, a media room for a good old movie night and secure car and bicycle parking. What's more, with dry and cold storage, a postal room and business centre, you never have to worry about missing a delivery again!



Ascend

Built on higher standards



Energy Efficiency Rating		Environmental Impact (CO ₂) Rating	
Current	Target	Current	Target
84	84	86	86
England & Wales		England & Wales	

Ascend

Built on higher standards